



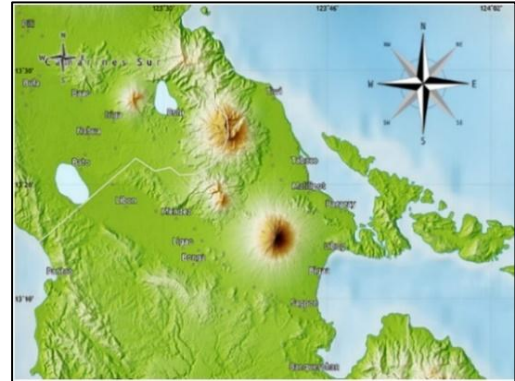
SPECIAL WEATHER FORECAST FOR MAYON VOLCANO

Issued at 9:00 AM today, June 11, 2026

Valid until the next issuance

Synopsis: Southwest Monsoon affecting the western section of Northern Luzon.

Forecast: Partly cloudy to cloudy skies with isolated rainshowers or thunderstorms will be experienced over Mayon volcano.



UPPER AIR DATA AS OF: 9:00 AM June 11, 2026

HEIGHT (km)	WIND DIRECTION (winds coming from)	WIND SPEED (kph)
1.0	Southeast	5
1.5	Northeast	11
2.0	East	8
2.1	East Northeast	7
2.2	Northeast	6
2.3	Northeast	5
2.4	East Northeast	6
2.5	Northeast	8
3.0	East	13
6.0	Southeast	26
10.0	East Southeast	27

Data from Legazpi Complex Station Upper Air Sounding

THREE-DAY WIND PROFILE FORECAST FOR MAYON VOLCANO BASED FROM GLOBAL SPECTRAL MODEL (GSM)

HEIGHT (above sea level)	THREE-DAY WIND PROFILE FORECAST FOR MAYON VOLCANO Model Basetime: June 11, 2026 (2:00 AM) (winds coming from)		
	June 12, 2026	June 13, 2026	June 14, 2026
1.5 km	East Northeast @ 2.07 kph	South Southeast @ 4.48 kph	South @ 11.13 kph
3.0 km	East Southeast @ 11.27 kph	Southeast @ 9.38 kph	South Southeast @ 11.53 kph
5.6 km	East Southeast @ 17.87 kph	East Southeast @ 12.99 kph	East @ 8.79 kph
9.0 km	East @ 23.27 kph	East Northeast @ 27.99 kph	Northeast @ 35.09 kph
12.0 km	East Northeast @ 25.31 kph	East Northeast @ 43.12 kph	East Northeast @ 61.21 kph

Data provided by Technique Application and Meteorological Satellite Section – Weather Division (TAMSS-WD)

WEATHER FORECASTER: RMP

tracking the sky...helping the country"